

Safeguarding and Wellbeing

Highlighting Local Services and resources in Hampshire

Hampshire County Council offers a wide range of support services, guidance and advice for families. In this week's sections we highlight some of the resources available online and how you can access other services that are designed to support a range of issues and needs that families may experience.

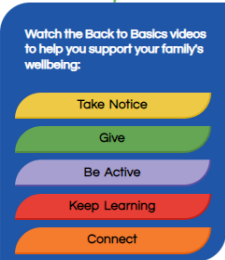


Back to Basics

Hampshire's **Back to Basics** Website is designed to **empower parents and carers to support their child's emotional wellbeing within the home.**

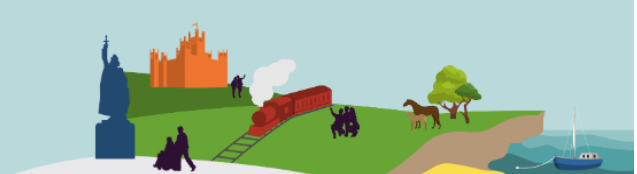
The aim is that the **Back to Basics** approach enables parents and carers to take control of the **5 Ways to Wellbeing**

<https://www.hants.gov.uk/socialcareandhealth/childrenandfamilies/back-to-basics>










Family Information and Services Hub

Find information about what is going on in your area, details on how to access services, organisations and activities in Hampshire, and the advice and support that is available.



<https://fish.hants.gov.uk/kb5/hampshire/directory/home.page>

A wide range of services are accessible via the link above at Hampshire's Family Information and Services Hub - each icon links to the resources and information about how they can be accessed...

 Hampshire's Local Offer Information, support and services for children and young people with special educational needs or disabilities (SEND)	 Childcare and Early Years Education Directory of childminders, pre-schools, day nurseries, out of school clubs and holiday schemes in your local area	 Family Support Information and resources to support parents and families	 Activities, Leisure and Play Directory of local community groups, organisations and activities
 Young People Information and advice for Young People, including those in care and Care Leavers	 Employment, Training and Learning Information for Young People about employment opportunities including Apprenticeships and Traineeships	 connect4communities Directory of local help and support for those in financial difficulty	 Emotional Wellbeing and Mental Health Directory of information, advice and support services to support your own and your children's emotional health and wellbeing